

# SALES PROPOSAL



Mobile LED Stage - SNI-40



*Get Your Target*

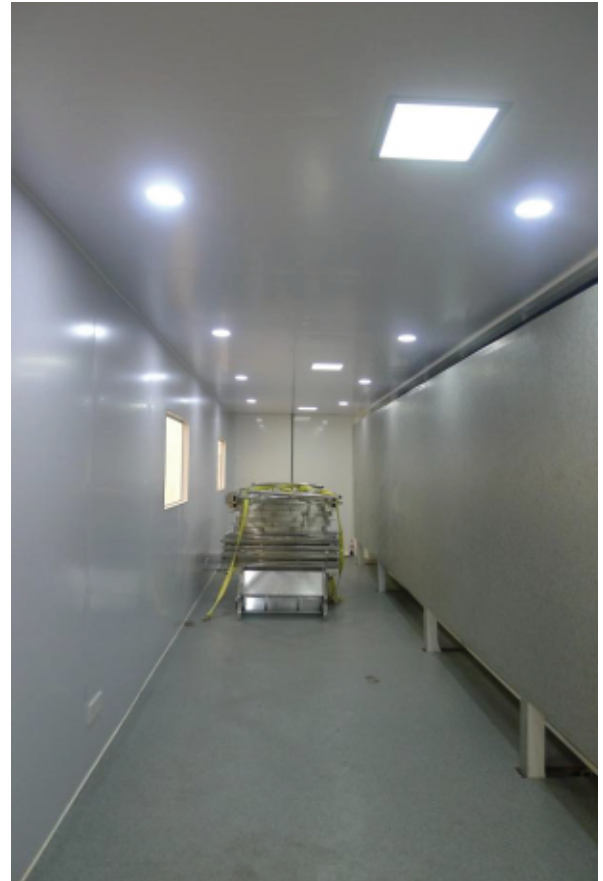
Sniper Marketing (SM) is a Marketing and Advertising Company, specializing in the creation and management of innovative advertising media channels and solutions that aim at specific Target Audience at specific Locations and on specific times. The need to advertise to a specific audience on times when there is no other occupational option is what we have called Sniper tactic approach and has led to the brewing of our marketing concepts and hence the company name.

Sniper Marketing is an international company with offices in South Africa and Mozambique both with an massive African foot print in Mobile LED Stage truck and trailer assembly, distribustion and hire.

We have established our name based on great service delivery, and the abilty to be available in every Country







## Part II. Technical Parameters

Model	SNI-40 (Truck Tractor not included)		
Trailer Chassis			
Brand	Henan Swan	External dimension	13000mmx2550mx3900mm
Curb weight	23000KG	Gross mass	23000KG
Hydraulic Lifting & Supporting System			
Hydraulic lifting system	Hydraulic lifting system; Lifting height: 1900mm~2000mm		
Hydraulic supporting system	It can go up 800mm,each afford 10T,its wind-proof level can reach to maximum level 8 when screen is lifted up		

Extreme Super Silent Generator Set			
External dimension	2100mm×950mm×1250mm	Power	24KW (or Client Option)
Power type	Commins or Perkins	Number of cylinders	Water-cooled inline 4-cylinder
Air displacement	3.9L	Bore*stroke	84mm×90mm
LED screen			
Main Screen size	5120mm×2240mm	Module size	320mm(W) ×320mm(H)
Chip	R,G,B; EPISTAR	Pixel pitch	8mm SMD (or Client Option)
Brightness	≥6500cd/m <sup>2</sup>	Max power consumption	1200W/m <sup>2</sup>
Power consumption	Average: 500W/m <sup>2</sup>	Life span	100,000hours
Power Supply			
Input voltage	Three phases, five wiring , 380V	Output voltage	220V
Electrical current	50A	Power consumption	Average: 0.5wh/m <sup>2</sup>
Multi-Media Control System			
Industrial PC	Processor: Dual Core CPU; PCI-E:1G; Hard disk:500G; CD-ROM: DVD; Memory:2G (or Client Option)		
Monitor	KVM 15-inch LCD display	Power amplifier	Amplifier included.
LED Speakers	Listed below	Control system of LED screen	LINSO (technology of point by point correction)
Outer Frame and Inner Decoration			
Material	Aluminum plate	Surface car baking varnish	pure white
Inner decoration	Fire Retardant Board	Waterproof processing	Vehicle plastic irrigation processing
Stage On board			
Full Stage Size	9mx5m	Loading Capacity	150kg/m <sup>2</sup>
Vehicle Specified Air Conditioner	4000w(cooling)/1600w(heating)	Video Processor	Video Processor for Live Broadcast

## Part III. Technical Advantages

### Vehicle-specified LED Display:

2

A. Made of large chip tube, high brightness, less attenuation, the luminance keeps over 6500cd/m after 5 years life-span of more than 100,000 hours.

B. With our patented high-refresh rate display technology, regardless of shooting with a camera or other photographic equipment will not result in scan lines. The entire screen is as clear as a mirror. With the unique point by point correction technology of the control card, the LED screen can be corrected a few years later. After the correction, the LED screen picture will be soft again. This is an effective solution to solve screen mess phenomenon.

C. PCB adopts four layers board, which is puncture resistant and anticorrosive, connectors are made of horn card buckle and DB9 terminals to prevent poor contacting damage resulting from the vehicle vibration. Waterproof design of each cabinet.

Lifting, system: hydraulic system, LED screen can be lifted up and down, to give the best view for all audiences.

Control System: Synchronous control system with PA and video processor. You could do any live camera feeds or interactive games consoles, live broadcast program in a more powerful and effective way. It can also show TV programs if you connect with a TV receiver box.

Stage : big hydraulic extending stage, 9mx3.5meter, it can automatically extend out and fold up, remote control, one person can set up the truck and stage in 30mins. Solid enough for dancing, jumping etc, can be used for big shows.



***We Get Your Target***

#### **MOZAMBIQUE**

Av: Samora Machel nº191/293  
Matola KingsVillage – Predio D6 R/C  
Cel: (+258 ) 84 46 000 47  
Tel/Fax: (+258) 21 499 542  
e-mail: [geral@snipermarketing.co.mz](mailto:geral@snipermarketing.co.mz)  
website: [www.snipermarketing.co.mz](http://www.snipermarketing.co.mz)  
Matola – Mozambique

#### **SOUTH AFRICA**

97 Modderfontein Road, President Park  
Midrand, Johannesburg  
Cel: (+27) 72 130 5789  
Tel: (+27) 10 312 5263  
e-mail: [info@snipermarketing.co.za](mailto:info@snipermarketing.co.za)  
website: [www.snipermarketing.co.za](http://www.snipermarketing.co.za)  
Johannesburg – South Africa